

THE LAUREL



Minutes from historic downtown Hendersonville and only a short drive from Lake Lure, is Vista at Blacksmith Run—an exclusive Western North Carolina mountain property designed for residential development. Blacksmith Run's secluded mountain lifestyle and four season climate turns an ordinary day into an unforgettable experience. With convenient access to all of Western North Carolina's treasures, this quiet mountain property was developed for those who appreciate the best that life has to offer.

www.vistadevelopers.com

DESCRIPTION

Craftsman Style
4 Bedrooms + Study
3 Bathrooms
2 Car Garage

SQUARE FOOTAGE

Garage: 448 sq. ft.
Main: 1689 sq. ft.
Opt. Bonus Room: 282 sq. ft.
Patio: 192 sq. ft.
Porch: 197 sq. ft.



THE LAUREL

SPECIFICATIONS:

1689 Heated Space

Optional Bonus Room
282 sq. ft.

Master BR on Main

2 Spare Bedrooms on Main

Attached 2 Car Garage

Gas Fireplace

Heat Pump System

EXTERIOR FEATURES:

Jeld-Wen Double Hung
Low Maintenance Windows

Cement Siding

Covered front porch

Fiberglass entry doors

INTERIOR FEATURES:

9' Ceilings

Vaulted Greatroom

Open Floor Plan

Granite Countertops Throughout

Laundry on Main

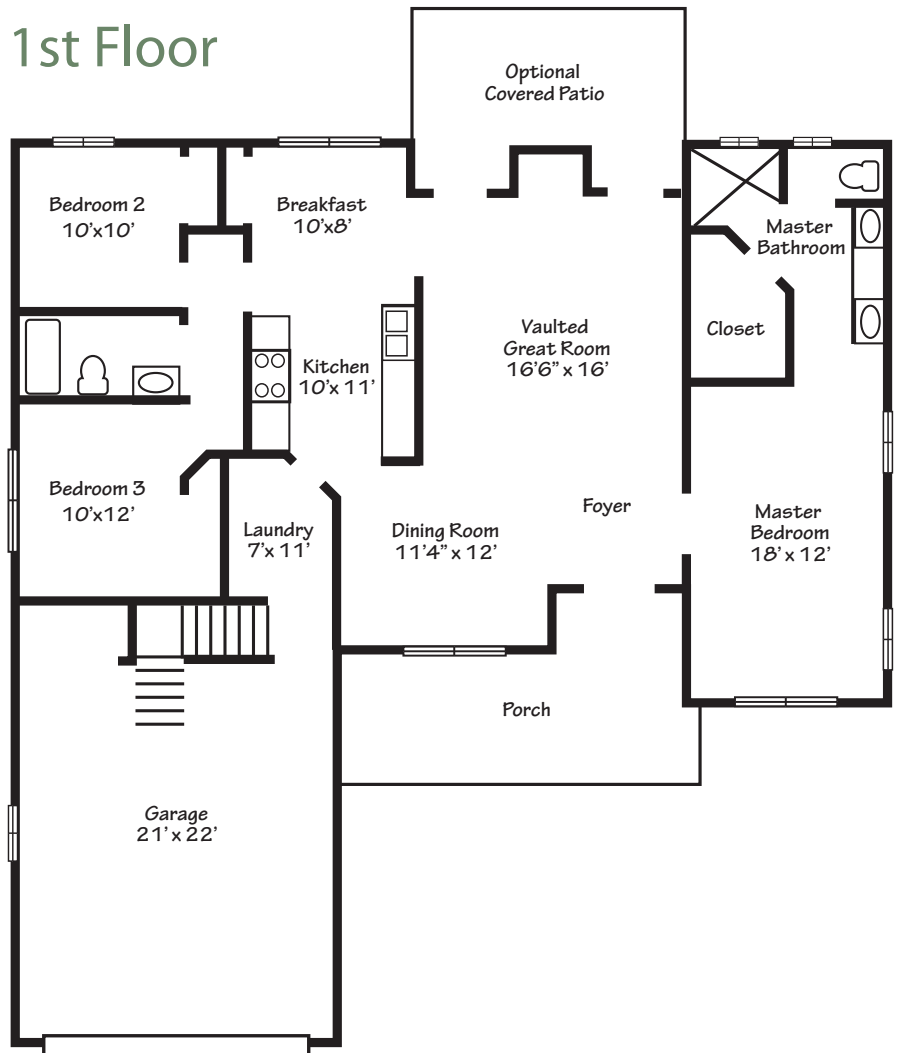
Hardwood in Main living Areas

Carpet in Bedrooms

Ceramic Tile in Wet areas.



1st Floor



2nd Floor

