



THE RIDGEWOOD



Minutes from historic downtown Hendersonville and only a short drive from Lake Lure, is Vista at Blacksmith Run—an exclusive Western North Carolina mountain property designed for residential development. Blacksmith Run's secluded mountain lifestyle and four season climate turns an ordinary day into an unforgettable experience. With convenient access to all of Western North Carolina's treasures, this quiet mountain property was developed for those who appreciate the best that life has to offer.

www.vistadevelopers.com

DESCRIPTION

Craftsman Style
4 Bedrooms
3 Bathrooms
2 Car Garage

SQUARE FOOTAGE

Garage: 454 sq. ft.
Main: 1756 sq. ft.
Bonus: 340 sq. ft.



Above elevation is for illustration purposes only. Actual colors, materials, landscaping, and other details can change at any time.

THE RIDGEWOOD

SPECIFICATIONS:

2096 SF Heated Space

Master BR on Main

2 Spare Bedrooms on Main

Large Bonus room with Bath
(4th Bedroom)

Attached 2 Car Garage

Gas Fireplace

Heat Pump System

EXTERIOR FEATURES

Jeld-Wen Double Hung
Low Maintenance Windows

Cement Siding

Covered front porch

Large Covered Rear Porch
with Patio

Fiberglass entry doors

INTERIOR FEATURES

9' Ceilings

Vaulted Greatroom

Open Floor Plan

Granite Countertops Throughout

Laundry on Main

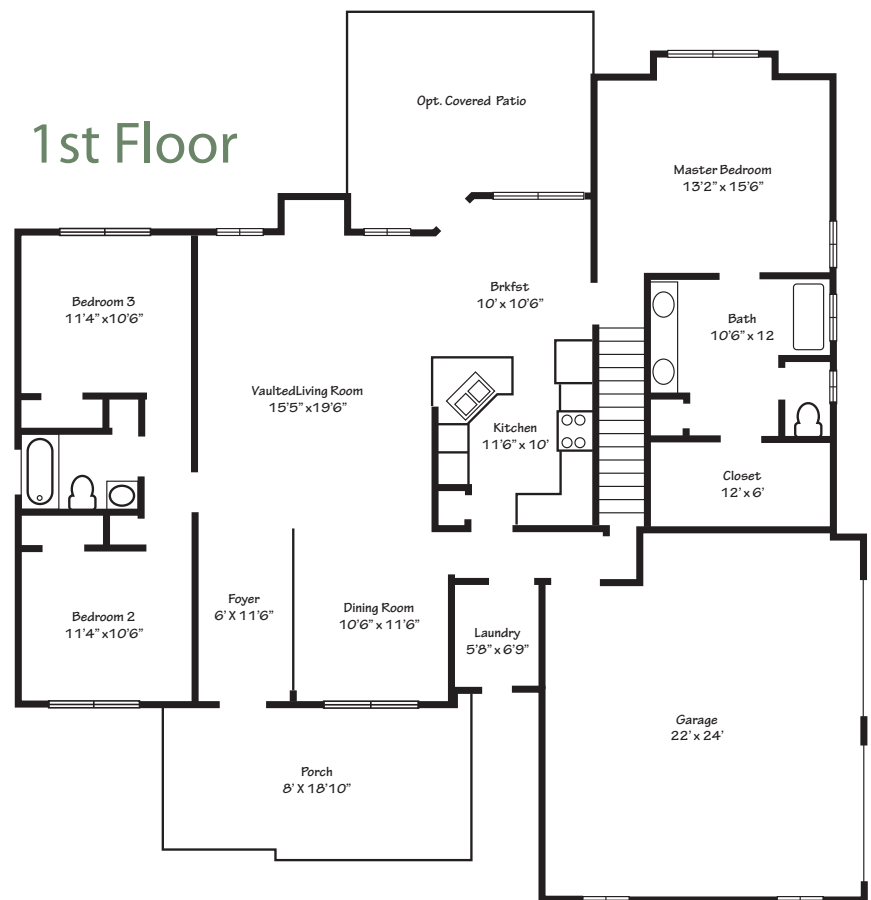
Hardwood in Main living Areas

Carpet in Bedrooms

Ceramic Tile in Wet areas.



1st Floor



2nd Floor

